

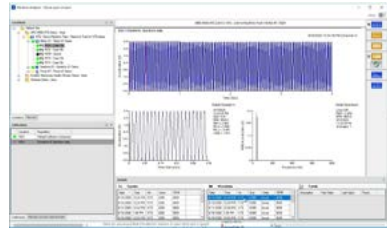
## ASSET MONITORING & HEALTH ANALYSIS SOLUTIONS (AMS)

Implement predictive intelligence and integrated protection technologies to reach business goals and achieve top-quartile reliability. With AMS technologies, you get asset management and condition indicator capabilities specific to the nature and criticality of production assets.

### VIBRATION ANALYSIS SOFTWARE

#### AMS MACHINE WORKS / AMS MACHINERY MANAGER MACHINE WORKS / AMS MACHINERY MANAGER

Combines predictive maintenance techniques with comprehensive analysis tools to provide easy and accurate assessment of the machinery health in the facility. The monitoring solution and/or device you choose will determine what software is right for your operation. Also available as a SaaS or Cloud-hosted software option.



### PORTABLE DEVICES

#### AMS 2140 MACHINERY HEALTH ANALYZER

- Route-based machinery health analyzer
- 4-Channel + Tri-axial Phase/Tachometer
- PeakVue predictive diagnostics
- Wi-Fi, Bluetooth, Ethernet, and USB 2.0
- CSA Class 1 Div. 2, ATEX Zone 2
- IECEx Zone 2

#### AMS TREX DEVICE COMMUNICATOR

- Commission, diagnose, and troubleshoot HART and Fieldbus devices
- Bluetooth and Wi-Fi compatible
- Powers HART loops and Fieldbus devices directly
- Auto Sync with AMS Device Manager
- Full-shift battery life, 32GB of storage
- IP 54 Housing, ATEX/CSA/IECEx/FISCO Approved



### WIRELESS MONITORING SOLUTIONS

#### AMS WIRELESS VIBRATION MONITOR

- Tri-axial Vibration + Temp Sensor
- 13 Trend Values
- PeakVue and embedded prescriptive analytics
- Secure WirelessHART® Mesh Network
- CSA Class 1 Div.1 / IP66 / NEMA 4x Enclosure



#### AMS 9420 WIRELESS VIBRATION TRANSMITTER

- Vibration + Temp sensor
- Battery or line powered
- Secure WirelessHART® Mesh Network
- CSA Class 1 Div. 1 / IP66 / NEMA 4x Enclosure



#### WIRELESS GATEWAYS

- Up to 100 devices per wireless gateway
- Integrate with any DCS
- Secure WirelessHART® Mesh Network
- Modbus TCP, Modbus RTU, and OPC
- CSA Class 1 Div. 2 / IP66 / NEMA 4x Enclosure



### CONTINUOUS MONITORING SOLUTIONS

#### AMS ASSET MONITOR (EDGE ANALYTICS DEVICE)

- Prediction, protection, and process analyzer
- Embedded prescriptive analytics
- 12-Channel w. CHARMs I/O technology
- Wired or Wireless Ethernet
- CSA Class 1 Div. 2, ATEX Zone 2



#### AMS 6500 MACHINERY HEALTH MONITOR

- Online condition and prediction
- PeakVue predictive diagnostics
- 24 channels, multiple assets
- Modbus, XML Data Transfer, OPC DA, etc.
- CSA Class 1 Div. 2, ATEX Zone 2
- IECEx Zone 2



#### AMS 6500 ATG PROTECTION + PREDICTION

- Online protection system for critical assets
- PeakVue predictive diagnostics
- OPC UA, Modbus TCP/IP and Modbus RTU
- API 670 compliant
- CSA Class 1 Div.2



#### AMS 6300 SIS DIGITAL OVERSPEED PROTECTION

- 3-Channel safety system for critical rotating assets
- Supports eddy current measuring chains
- SIL 3 rotational speed measurement
- SIL 2 rotational direction detection
- PC Configurable and Profibus



#### AMS EZ1000 EDDY CURRENT CONVERTER

- Supports all sensor types and cable lengths
- Easy on-site calibration and configuration
- API 670 compliant
- CSA Class 1 Div. 2, ATEX Zone 2



#### SENSORS & CABLES

- We offer a wide array of sensors and cables for various applications and hazardous ratings.

## PORTABLE EMISSION ANALYZERS AND ACCESSORIES

### ECOM

**Multi-gas analyzers for Engines, Turbines, and Boilers used for tuning, diagnostics, general and compliance testing**

#### ECOM-B, CL2

- 2 gas analyzer

#### ECOM-D

- 3 gas, diagnostic and tuning analyzer

#### ECOM J2KN

- Advanced, multi-gas analyzer



## MACHINERY & ENGINE SOLUTIONS LOCATIONS

**Corporate Office  
Sales/Service**  
17630 Perkins Rd.  
Baton Rouge, LA 70810  
**225-751-3788**

**Lafayette Office  
Sales/Service**  
401 Wall St.  
Lafayette, LA 70506  
**337-233-8331**

**Metairie Office  
Sales/Service**  
28 N. Arnoult Rd.  
Metairie, LA 70002  
**504-887-8550**

**Mobile Office  
Sales/Service**  
2203 Perimeter Rd. Ste  
300  
Mobile, AL 36615  
**251-653-9898**

**Shreveport Office  
Sales/Service**  
9656 St. Vincent Ave.  
Shreveport, LA 71106  
**318-861-0168**



## BRANDS



## SERVICE & SUPPORT

### PROJECT SERVICES

- System Inspection / FEED Studies
- Project Management
- API 670 Machinery Protection System Design and Installation
- Factory Acceptance Testing (FAT)
- Site Acceptance Testing (SAT)
- Process Startup Support
- System Commissioning
- Vibration Database Services

### CONSULTING SERVICES

- Vibration Program Development
- Root Cause and Consultation
  - Motion Amplification Studies
  - Operational Deflection Shape (ODS) Studies
  - Flow Induced Vibration (FIV) Studies
  - Failure Mode and Effects Analysis (FMEA)
  - Dynamic Pressure Studies
  - Valve Noise & Fatigue Studies
- Education and Certification Offerings

### RUN AND MAINTAIN SERVICES

- Embedded Predictive Maintenance Contracts
- Remote and/or Onsite Data Analysis
- Balancing and Alignment Support
- Local Oil/Grease Lab – Sampling and Analysis
- Turbomachinery Analysis
- Infrared Thermography Testing
- Electrical Motor Field Testing
- Lifecycle Care
- Emergency Support

### 24/7 SERVICE

**225-751-3788**  
**JOHNHCARTER.COM**

**CONTROLWORX**  
A John H. Carter Company

## COMBUSTION MANAGEMENT AND AUTOMATION SYSTEMS

### REMVUE

#### Full Automation with Combustion Management for Advanced Applications

- Combustion Management using advanced algorithms, resulting in the tightly controlled emissions with the lowest BSFC,
- Advanced algorithms support varying fuel BTU contents
- Start/Stop Sequencing
- Digital Speed Governing
- Load Control
- Advanced Diagnostics
- Emissions tracking and reporting

#### System Upgrades

##### REMVue 300 to 505

- Field replacement for older R300 systems with minimal downtime

##### REMVue 300 to 505

- Field replacement for older R300 systems with minimal downtime
- In-field replacements of legacy Millennium systems using the latest PLC control platform



## COMPRESSOR VALVES, PACKING AND COATINGS

### COMPRESSOR PRODUCTS INTERNATIONAL

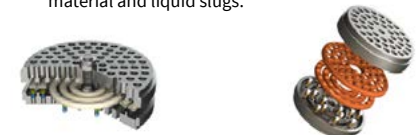
#### Compressor Valves and Packing

##### Hi-Flo™ RS Valve (Replaceable Seat Valve)

- Replaceable seat eliminates wear to the valve housing, eliminating the need for off-site reconditioning,
- Radiused disc ring design provides better gas flow, and allows processing of gases that contain debris and liquid slugs.
- Reduces the need for spare valve inventory and operating costs.

##### Hi-Flo™ RD Valve (Radiused Disc Ring Valve)

- Feature aerodynamic radiused profiled rings providing increased efficiency, reduced power consumption and reliable operation where temperatures and pressures are extreme.
- Aerodynamic rings allow the free passage of foreign material and liquid slugs.



#### Compressor Valves and Packing

##### EMISSIONGUARD™ TR2 Packing Ring

- EMISSIONGUARD™ TR2 packing ring multiplies the benefits of a tangent to rod ring and a step tangent ring by combining the two rings into one, providing a more efficient seal, reduced friction and extended lifetime.

#### Compressor Valves and Packing

##### Fivealloy™ Coatings

- Fivealloy™ coating and plasma spray process is an ideal method for repairing compressor piston rods, cylinders and cylinder liners to better-than-new condition, in many cases as an alternative to replacement where the component could not be otherwise repaired.



## COMPRESSOR LUBRICATION SYSTEMS

### COMPRESSOR PRODUCTS INTERNATIONAL

#### Lubricator Pumps and Gearboxes for Engines and Compressors

##### Proflo® EOS

- Self-adjusting lubrication pump system which monitors oil flow, automatically adjusts for pump wear and allows for remote control of flow rates based on unit conditions

##### OE Style Gearboxes

- Lubricator boxes and pumps for OE applications using P55U series pumps.

##### HVLP Pump Systems

- The High Volume Lube Pump (HVLP) delivers precise quantities of lubrication

##### HD Divider Blocks

- HD Divider blocks proportion precise amounts of lubrication while reducing the number of potential leakage points in the system

#### Pressure Relief, Filtration and Accessories

##### Pressure Relief

- Pop Open Pressure Relief (POPR) is accurate, repeatable, and resettable which replaces old rupture discs

##### Filtration

- Hi and Lo pressure filtration units insure the longest life from your lubrication system

#### We offer field support ranging from PMs to complete system retrofits



## DIESEL ENGINE CONTROLS AND INSTRUMENTATION

### ENOVATION CONTROLS

#### Controls and Displays for Mechanical and Electronically Controlled Engines

##### PowerCore Controllers

##### Ready-to-Run (RTR) Control Panels

- CANBus ready controls for pumps, generators and mechanical drives

##### PowerVision Controller and Displays

- Controls and Displays for Stationary and Marine Engines

##### MGC Series Generator Controls

- Controls for single and multiphase generators

##### End Devices

- Thermocouples and RTDs
- Pressure senders and transmitters
- Level displays, controllers and alarms
- Fuel Solenoids, Air Shutoffs, and Rack Pullers



## STARTING SYSTEMS FOR ENGINES AND TURBINES

### TECH DEVELOPMENT (TDI)

#### Turbine Air Starters, Regulators and Accessories for Engines from 5 to 100 Liters

##### T6/T7 Series

- State of the art starters for reciprocating engines lowest weight to HP ratio



##### T30, T50 and T100 "TurboTwin" series

- Inertia, Pre-Engaged, and Gas Turbine applications, industry's most efficient starter



##### Starter REMAN programs

- Core based program that keeps spare units onsite and ready for use



## SERVICE & SUPPORT

### Factory trained and accredited

#### SHOP SERVICES

- Ignition System Testing
- Ignition and Thermocouple Header systems
- Lubrication System component testing
- Engine Starter Repairs
- Panels and FATs

#### FIELD SERVICES

- Panel installations and commissioning
- REMVue and Murphy Panel Retrofits
- PMs and Reciprocating Machinery analysis (both portable and online systems)
- Ignition and AFR system troubleshooting and installations
- Emissions Testing and tuning
- Lubrication System PM, troubleshooting and installations
- Engine Starter installations

### 24/7 SERVICE

# 225-751-3788

## JOHNHCARTER.COM

## MACHINERY & ENGINE SOLUTIONS LOCATIONS

**Corporate Office Sales/Service**  
 17630 Perkins Rd.  
 Baton Rouge, LA 70810  
**225-751-3788**

**Lafayette Office Sales/Service**  
 401 Wall St.  
 Lafayette, LA 70506  
**337-233-8331**

**Metairie Office Sales/Service**  
 28 N. Arnoult Rd.  
 Metairie, LA 70002  
**504-887-8550**

**Mobile Office Sales/Service**  
 2203 Perimeter Rd. Ste 300  
 Mobile, AL 36615  
**251-653-9898**

**Shreveport Office Sales/Service**  
 9656 St. Vincent Ave.  
 Shreveport, LA 71106  
**318-861-0168**



## BRANDS

**ecom®**

**BG™**

**CPI** Lubrication  
an emerson company

**IRISS**  
ENGINEERING RETROFIT

**M MURPHY**  
PRODUCTION CONTROLS

**EMERSON**

**AMS**

**CONTROLWORX**  
 A John H. Carter Company